

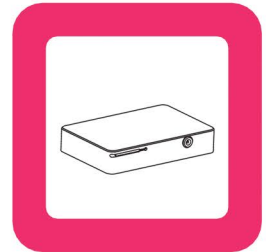


# COLD CHAIN REAL TIME TRACKING

for the Pharmaceutical / Biotechnology Industry

## Real Time Shipments Tracker

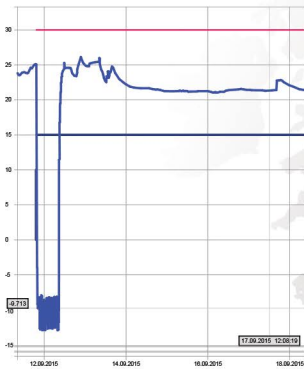
# XperTrack®



### XperTrack

Prevent drug shortage: Control remotely your cold chain shipments  
Alarms are triggered when your products exceed the allowed temperature and vibrations during shipments

Shipments integrity: Instantaneously detect if your shipment has been tampered with  
display the current position and temperature of your container



Suitable applications:  
Cold chain shipments  
Logistics  
Package integrity  
Remote monitoring

### Technical Specifications:

Logger type	Temperature	Shock
Sensor type	4 wires PT-100	acceleration
- flexible	PTFE 480 mm (19")	
- customized	Up to 1000 mm (39")	
Operating range	-30°C to +60°C (-200°C to +200°C sensor only)	
Accuracy	0.1°C	
Sensitivity	±0.01°C	10 levels (shock / free fall)
Sampling rate	30 sec to 24 hours, user configurable	instantaneous on event
Logger Update Rate	20 min to 24 hours, user configurable	
Memory capacity	128,000 data points	
Internal clock drift	4 sec / 24 h @ +23°C	
Weight	300 g (10.58 oz) battery included	
Size	135 x 90 x 25 mm (5.31 x 3.54 x 0.98")	
Antenna	Internal	
Power	2 x Li-ion rechargeable batteries, 11.52Wh each classified UN3481 under IATA DGR section 3.9.2.6 compliant with ICAO/IATA Packing Instructions 967	
Battery lifetime	Up to 2 months, based on usage	
Calibrations	Factory: traceable NIST / COFRAC - ITS-90 coefficients stored in the internal memory User: close loop calibration, using XperTrack® software	

